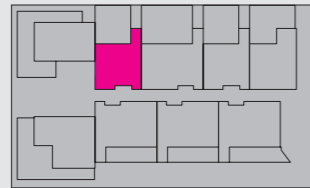


VERDANT

APARTMENTS

THE APARTMENTS

TYPE D1

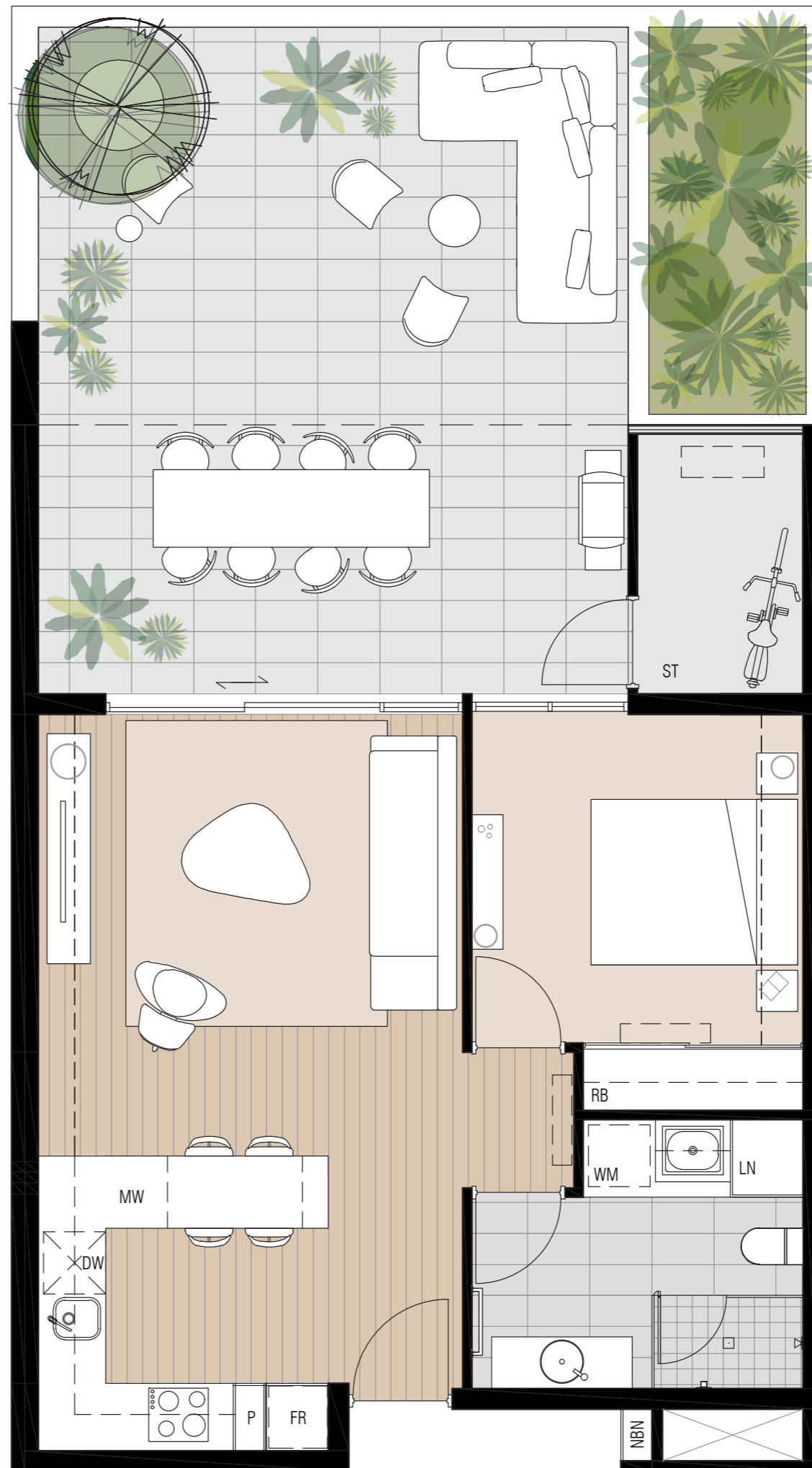


Level 6
Apartment No. 12
Bedrooms 1
Bathrooms 1
Car Bays 1

Total Living Area: 97m²
Terrace Area: 42m²
Store Room Area: 4m²

General Notes:

- Variations from strata plan may apply.
- Furniture is indicative only.
- Shape and configuration of balconies, doors, windows, condensers and ducts may differ from those illustrated.
- Areas of apartment given are based on architectural measurements. This varies from Strata areas as it is a different method of measuring the apartment.



Please Note: Plans are not to scale